

# VIRGINIA BELT PROPERTY

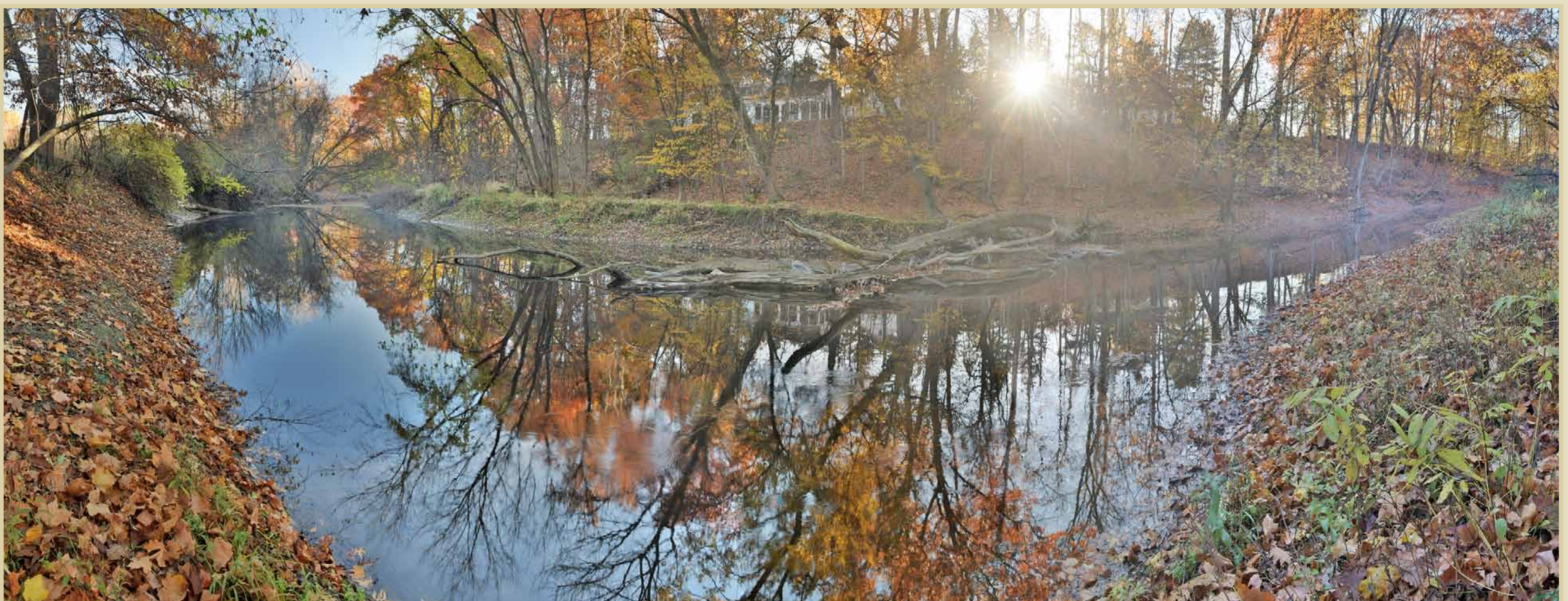
- 1941 Home on 45 acres hillside overlooking Swan Creek
- Property donated to Metroparks in 1999
- Adjacent to 67 acres donated to Metroparks by the Anderson family





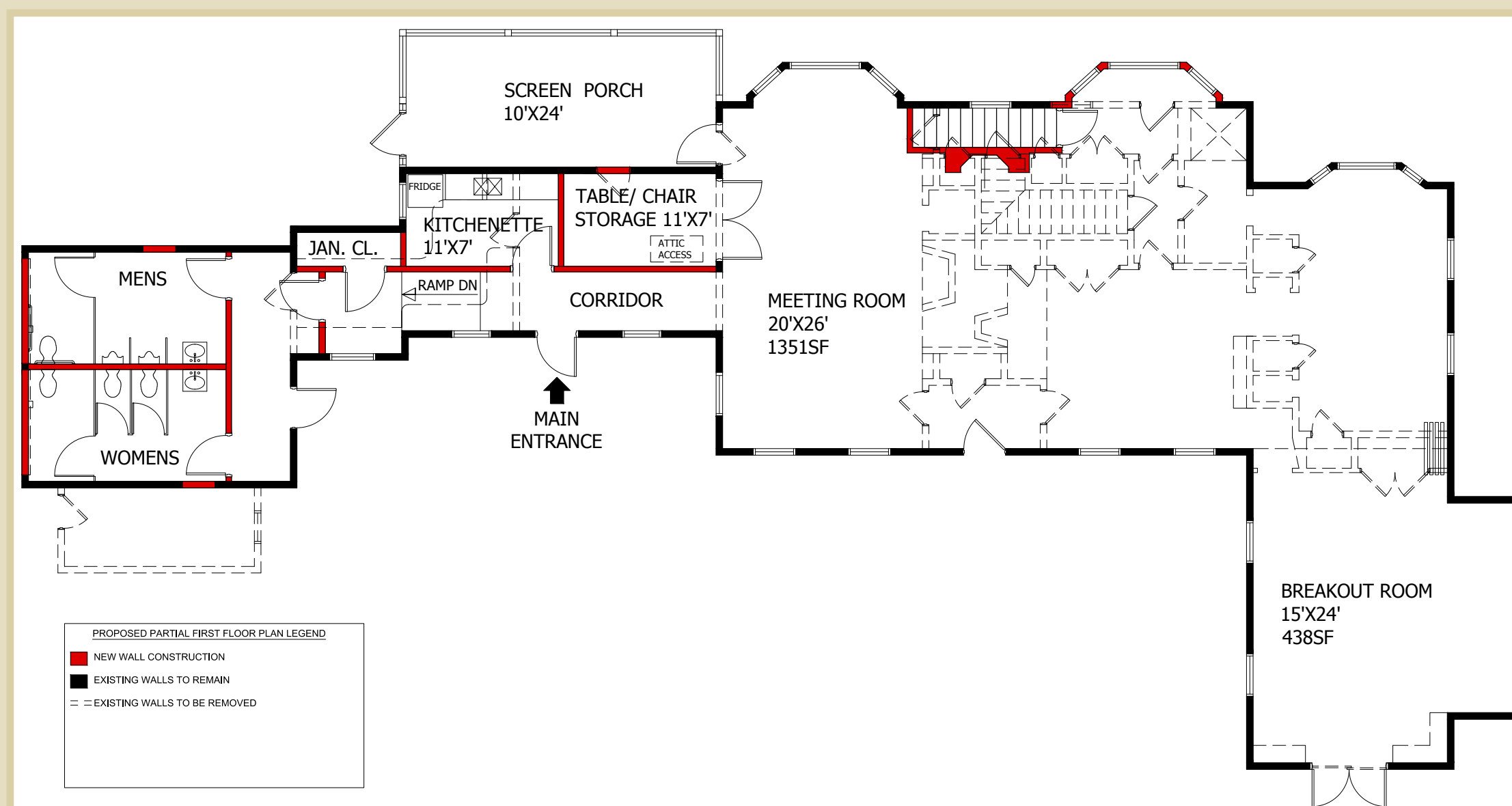
# NOT A TYPICAL METROPARK

- Only in use during Metroparks programs, small events and rentals
- Wayside park accessible by canoe/kayak from Swan Creek
- Flexible use space available for private functions
- Parking for 30 cars
- Patrolled daily by Swan Creek Preserve ranger





# VIRGINIA BELT PROPERTY





# BELT PROPERTY

51 acres total; 2.66 acres (5%) developed

1.9 acres of lawn to be restored to natural meadow

47 dead, declining or non-native trees to be removed during development and replaced with a greater number of trees and restoration

Driveway minimum width allowed by state fire code “to protect the safety of life and property”

Bio-retention system for water runoff exceeds city and EPA requirements to help improve water quality in Swan Creek