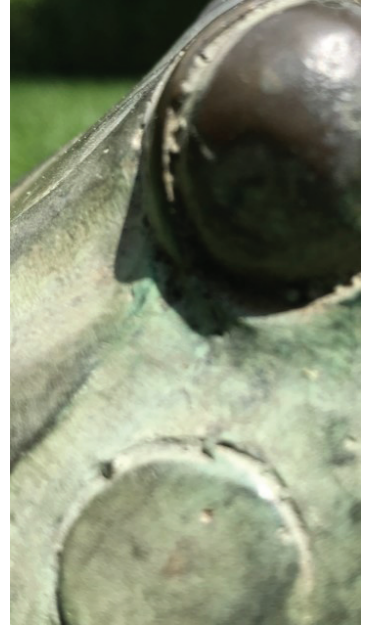


# Observation Challenge



Can you recognize these park objects up close?



Did you know the Maumee River Water Trail is Northwest Ohio's newest scenic water trail? It stretches 107 miles connecting 5 Metroparks, 3 state parks and 15 other publicly owned parks.

Metroparks Water Quality Monitoring volunteers identify macroinvertebrates and are currently field testing the Erie Open Systems device, a smartphone-based spectrometer for measuring nitrates and phosphates in water.

Blue jays are considered a keystone species for the role they play in dispersing the acorns of oak trees.