



# NEW WATERFRONT METROPARK

*Public Open House, June 21, 2017*

# UNDERSTANDING YOUR PERSPECTIVE

*PUBLIC OPEN HOUSE*

- Welcome/Introductions
- Project Presentation
  - Project background
  - Benchmarking
- Open House Station Feedback



# THE PARK PLANNING PROCESS



# WHAT YOU HAVE:

2% PARKLAND  
32 ACRES

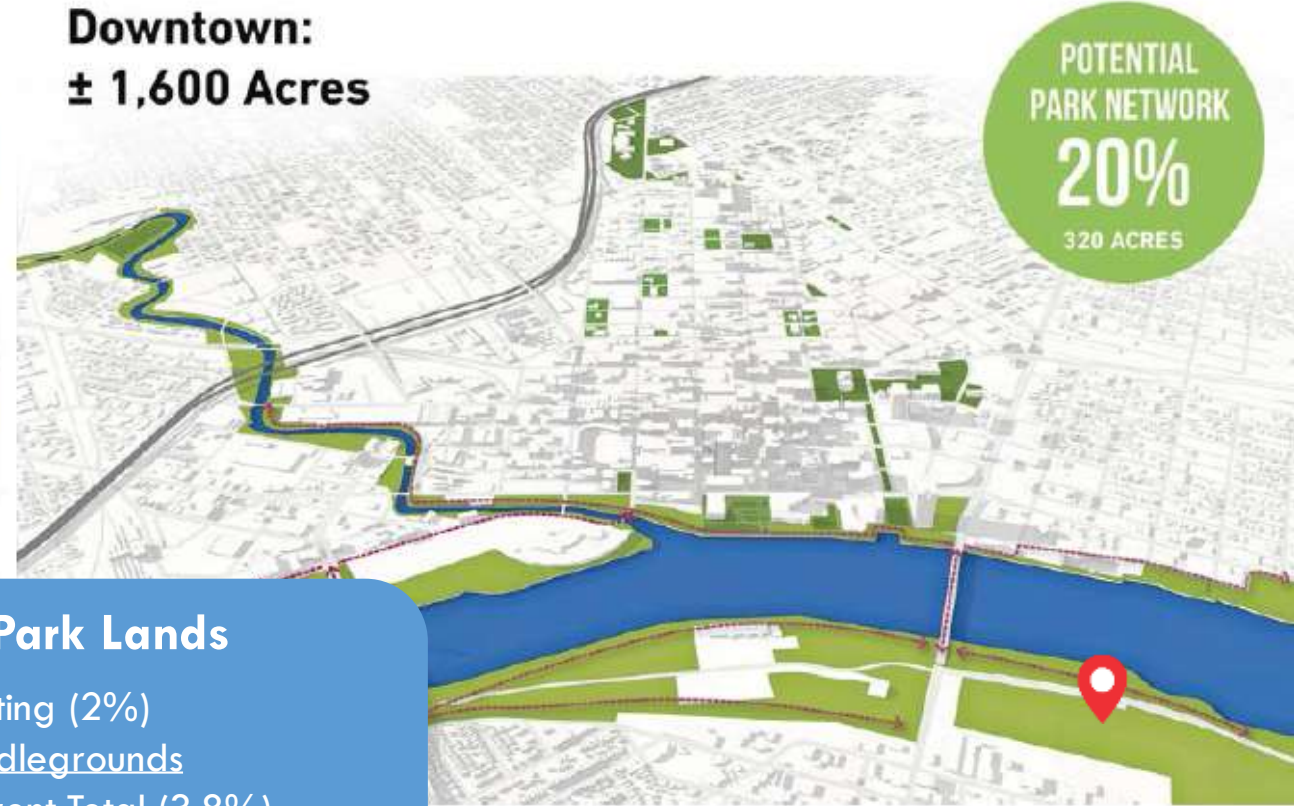
Downtown:  
± 1,600 Acres



# WHAT YOU NEED:

A NETWORK OF PARKS  
320 ACRES

Downtown:  
± 1,600 Acres



## Expanding Park Lands

32 Ac.	Existing (2%)
28 Ac.	Middlegrounds
60 Ac.	Current Total (3.8%)
54 Ac.	New Metropark
114 Ac.	Future Total (7%)

# MARINA DISTRICT FRAMEWORK PLANS (MKS)



# GUIDING PRINCIPLES

01

Honor the values and expectations expressed by the community

02

Connect the Toledo community back to its waterfront

03

Enhance ecological services

- Prioritize reforestation
- Improve water quality
- Adhere to the 80/20 rule of park development

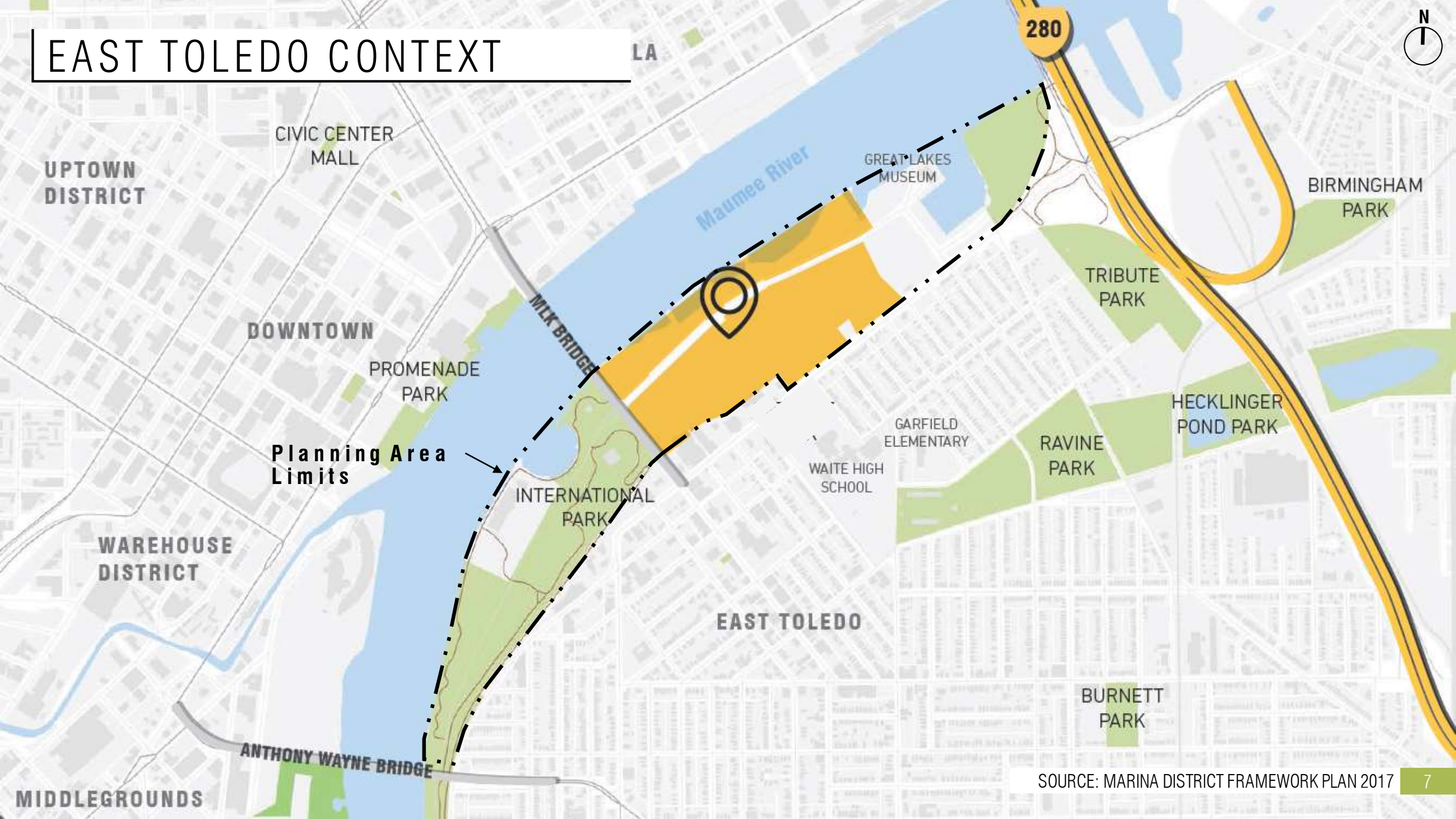
04

Incorporate local, state, and national trends in recreation and accessibility

05

Advance regional connectivity

# EAST TOLEDO CONTEXT



# Under the Maumee (Site 1890)

Swan Creek

Downtown  
Toledo

Oak Street

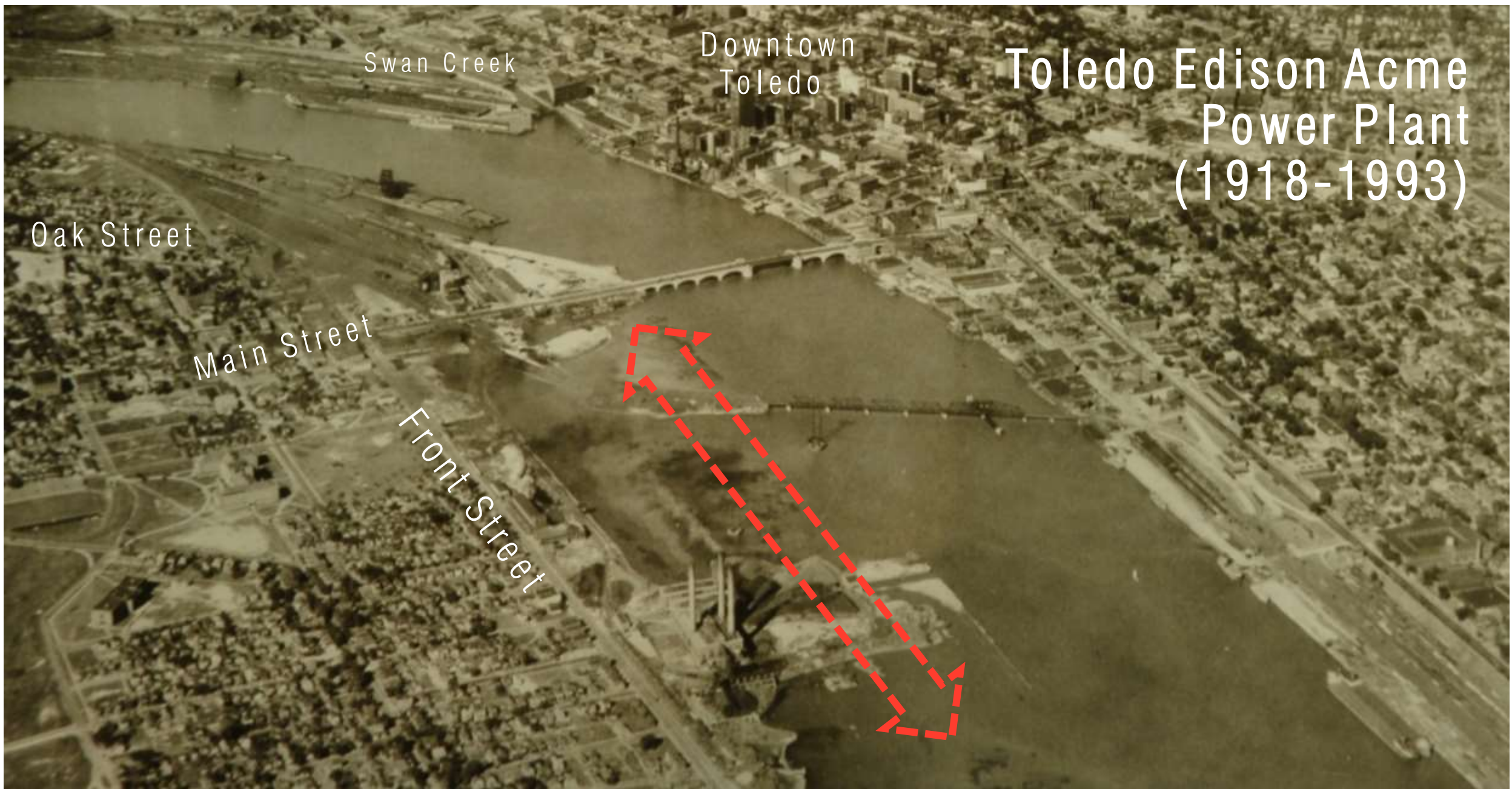
Main Street

platt Street

Front Street







Swan Creek

Downtown  
Toledo

# Toledo Edison Acme Power Plant (1918-1993)

Oak Street

Main Street

Front Street

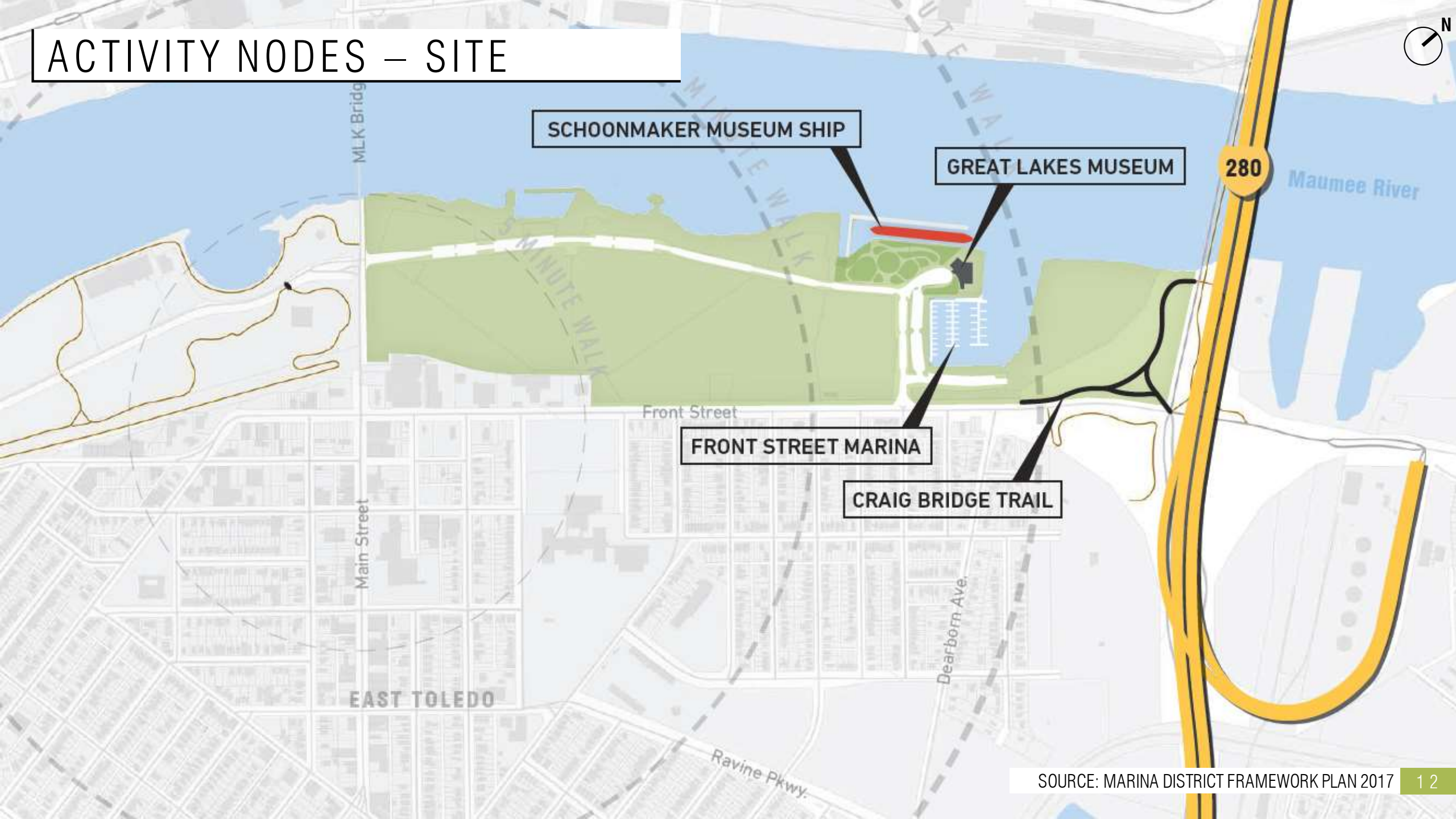
# Preparing for a New Future (1993...)



# Planning Area Today



# ACTIVITY NODES – SITE



SCHOONMAKER MUSEUM SHIP

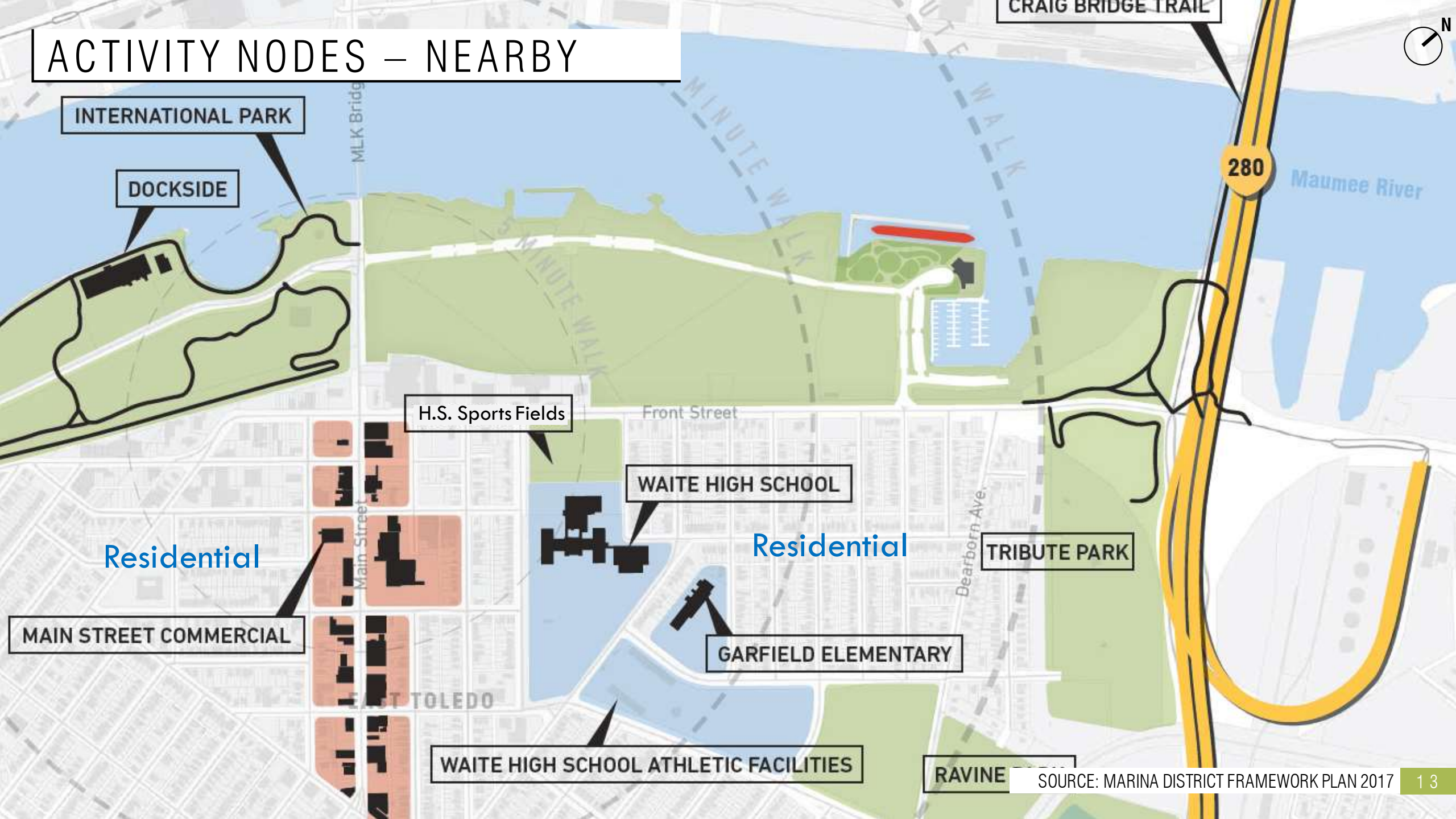
GREAT LAKES MUSEUM

FRONT STREET MARINA

CRAIG BRIDGE TRAIL

EAST TOLEDO

# ACTIVITY NODES – NEARBY



# PARK ZONES

PROMEDICA  
**1.5 ACRES**

PROMEDICA  
**13.4 ACRES**

COMMERCIAL  
**8.6 ACRES**

METROPARKS  
**54 ACRES**

METROPARKS OPTION  
**6.8 ACRES**

METROPARKS OPTION  
**11 ACRES**

- Phase 1 – 21 acres
- Phase 2 – 15 acres
- Phase 3 – 18 acres
- Option Parcels – 17.8 acres
- Development Parcels – 14.9 acres

Stakeholders were asked: What is needed in this new park in order to be a success?

Here is what they said

#### A Unique Destination

- Unique opportunities that don't exist in other parks.
- Create a reason for people to come to East Toledo
- Something big that makes it iconic.

#### Celebrates East Toledo

- Reflects history of East Toledo riverfront
- Energizes and activates East Toledo

Be sure that it is **connected** to... the east side neighborhoods, adjacent businesses and employees, downtown, adjacent parks and trails, the waterfront, the regional bikeway system

Stakeholders were asked: What is needed in this new park in order to be a success?

Here is what they said

### **Support Economic and Community Development**

- Improve quality of life and activate community.
- “Grow the Economic Pie”
- Revitalize rest of business district.
- Improve curb appeal on Front Street
- Improve character/quality of the area
- Attract young employees by showcasing green spaces
- Stabilize the residential communities
- Hold events for people to gather so the businesses grow with the neighborhood.

### **Youth Focused**

- Kid friendly recreation, more playgrounds
- Skateboarding



Stakeholders were asked: What is needed in this new park in order to be a success?

Here is what they said

#### **Water - Oriented Recreation**

- Programmed water activities.
- Where families can engage with water
- Has an adventurous component like Whitewater
- Boat Launch and Motor Boat ramp
- Fishing

#### **Other Recreation**

- Flexible use of space and 4 season
- Accessible to all ages and all abilities
- Major gathering space. Amphitheater
- Fitness facility and fitness paths

#### **Activities/Programming/Events**

- More youth activities
- Programs that engage the community, festivals, event spaces. Outdoor and indoor
- Food vendors in park

- 
- An aerial photograph of a city skyline, likely Boise, Idaho, showing a dense urban area with various buildings, a large stadium, and a river with a bridge. The image is used as a background for the text overlay.
- KATHRYN ALBERTSON PARK (BOISE, ID)
  - LEWIS AND CLARK LANDING (OMAHA, NE)
  - A GATHERING PLACE FOR TULSA (TULSA, OK)
  - PRINCIPAL RIVERWALK (DES MOINES, IA)
  - RIVERSIDE PARK (GRAND RAPIDS, MI)

# BENCHMARKING

# KATHRYN ALBERTSON PARK (BOISE, ID)

*BENCHMARKING*

Encompasses **40 acres** of land near the Boise River, close to Boise's urban core and the Boise State University campus, and is part of a conservation legacy.

- The city has embraced its natural areas and used them to enhance their quality of life.
- Two state-of-the-art waveshapers are the highlights of the **\$3.6 million** project (2012)
- US News and World Report No. 12 Best



# LEWIS AND CLARK LANDING (OMAHA, NE)

*BENCHMARKING*

Lewis and Clark Landing is the original landing site of the 1804 Lewis and Clark Expedition.

- The walking trail connects to the Bob Kerrey Pedestrian Bridge that spans the river and joins Omaha with Council Bluffs, Iowa.



# A GATHERING PLACE FOR TULSA (TULSA, OK)

*BENCHMARKING*

George Kaiser Family Foundation (GKFF) is leading an effort to significantly enhance the River Parks by **connecting three adjacent waterfront** parcels to the existing system

- One of America's **most livable** large cities (Forbes)
- Largest private gift to a public park in U.S. history.



# PRINCIPAL RIVERWALK (DES MOINES, IA)

*BENCHMARKING*

Principal Riverwalk is a recreational park district along the banks of the Des Moines River in Des Moines, Iowa

- The riverfront development will connect the city with Central Iowa's **300 miles** of wilderness trails
- Features a 1.2 mile trail connecting the east and west sides of downtown



# RIVERSIDE PARK (GRAND RAPIDS, MI)

## BENCHMARKING

Passive and active recreation along the Grand River – trails, lagoons for fishing and nature study, boat launching ramps, ball diamonds, disc golf courses, and is host to many community festivals and events.

- **6<sup>th</sup> most popular fishing city** (Field & Stream Magazine)
- **#19 for Quality of Life Amenities & Desire to Live There** (U.S. News & World Report)
- The Grand Rapids Whitewater Project is estimated to stimulate net new economic impacts of **\$15.9 million to \$19.1 million per year**.
- The new project is also projected to generate between **250,000 to 550,000** new visitors annually.



# FEEDBACK

---

## Station 1: The Big Picture

*What part of East Toledo's past should be celebrated in the new Metropark? Why are you proud to be from East Toledo? What would you name the new Metropark?*

## Station 2 Connecting to the Site

*How would you improve connectivity to the Metropark. How would you get there? (walk, bike drive bus)? Where do you live?*

## Station 3 Benchmarking

*What great parks/spaces have you visited?*

## Station 4 Fundamental Park Elements

*How would you like to experience nature?*

## Station 5 Signature Recreation

*Which recreation programs might be well suited for this new Metropark?*

# Thank you for participating!

Please feel free to share additional thoughts throughout the process with Emily Ziegler at [Emily.Ziegler@metroparkstoledo.com](mailto:Emily.Ziegler@metroparkstoledo.com)