

Place a sticky note in the box with something important to East Toledo that should be celebrated in the new park.

WHAT PART OF EAST TOLEDO'S PAST SHOULD BE CELEBRATED IN THE NEW PARK?

PLACE YOUR STICKY NOTE HERE!

Place a sticky note in the box describing why you are proud to be from east toledo.

WHAT MAKES YOU PROUD TO BE FROM EAST TOLEDO?

PLACE YOUR STICKY NOTE HERE!

Place a sticky note in the box with your best idea for the name of the new waterfront metropark.

WHAT WOULD YOU NAME THE NEW METROPARK?

PLACE YOUR STICKY NOTE HERE!

1810 1820 1830 1840 1850 1860 1870 1880 1890 1900 1910 1920 1930 1940 1950 1960 1970 1980 1990 2000 2010 PRESENT

1807
FIRST PERMANENT EAST SIDE RESIDENT

Peter Navarre, along with his brother Robert, was the first permanent East Side resident. They first settled the land east of the Maumee river in 1807.



1833
TOLEDO WAS FOUNDED

The city was founded by United States citizens in 1833 on the west bank of the Maumee River, and originally incorporated as part of Monroe County, Michigan Territory. It was re-founded in 1837, after conclusion of the Toledo War, when it was incorporated in Ohio.

1824
CONSTRUCTION OF ERIE CANAL

In 1824 the Ohio state legislature authorized the construction of the Miami and Erie Canal and later its Wabash and Erie Canal extension in 1833. The canal's purpose was to connect the city of Cincinnati to Lake Erie for water transportation to eastern markets.

1850's
DRAINING THE SWAMP

In the 1850s the states began an organized attempt to drain the swamp for agricultural use and ease of travel. Various projects were undertaken over a 40-year period.



1850-1900
RAILROADS BOOST INDUSTRY

In the last half of the 19th century, railroads slowly began to replace canals as the major form of transportation. They were faster and had greater capacity. Toledo soon became a hub for several railroad companies and a hotspot for industries.



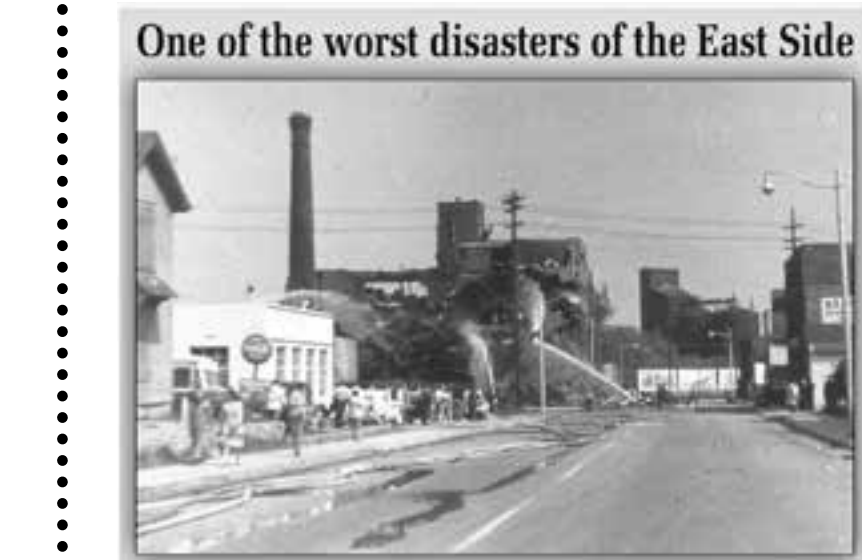
1912
WAITE HIGH SCHOOL UNDER CONSTRUCTION

The Collegiate Gothic school, which took four years to build and cost \$900,000, was designed by nationally-known architect David Stine.



1939
THE LAST EAST SIDE STREETCAR

The last East Toledo streetcar run c. 1939. Members of the East Toledo club along with city and community traction co. officials take part in the last Starr Ave streetcar ride.



1962
"ONE OF THE WORST DISASTERS OF THE EAST SIDE"

An explosion that took the lives of 10 workers at the Maumee Chemical Company. Windows shattered for miles around and buildings shook as far away as Waite High School.

1993
DEMOLITION OF EDISON POWER PLANT

The plant was one of two closed in 1993 by Centerior Energy Corporation, who owned Toledo Edison. For several years the plant was mothballed, but was never turned back on. Demolition of the plant was announced in 2007, and was completed in 2013.



2017
PREPARING FOR A NEW FUTURE

East Toledo undergoes master planning to kickstart a transformation of the riverfront from vacant land to vibrant Metropark.