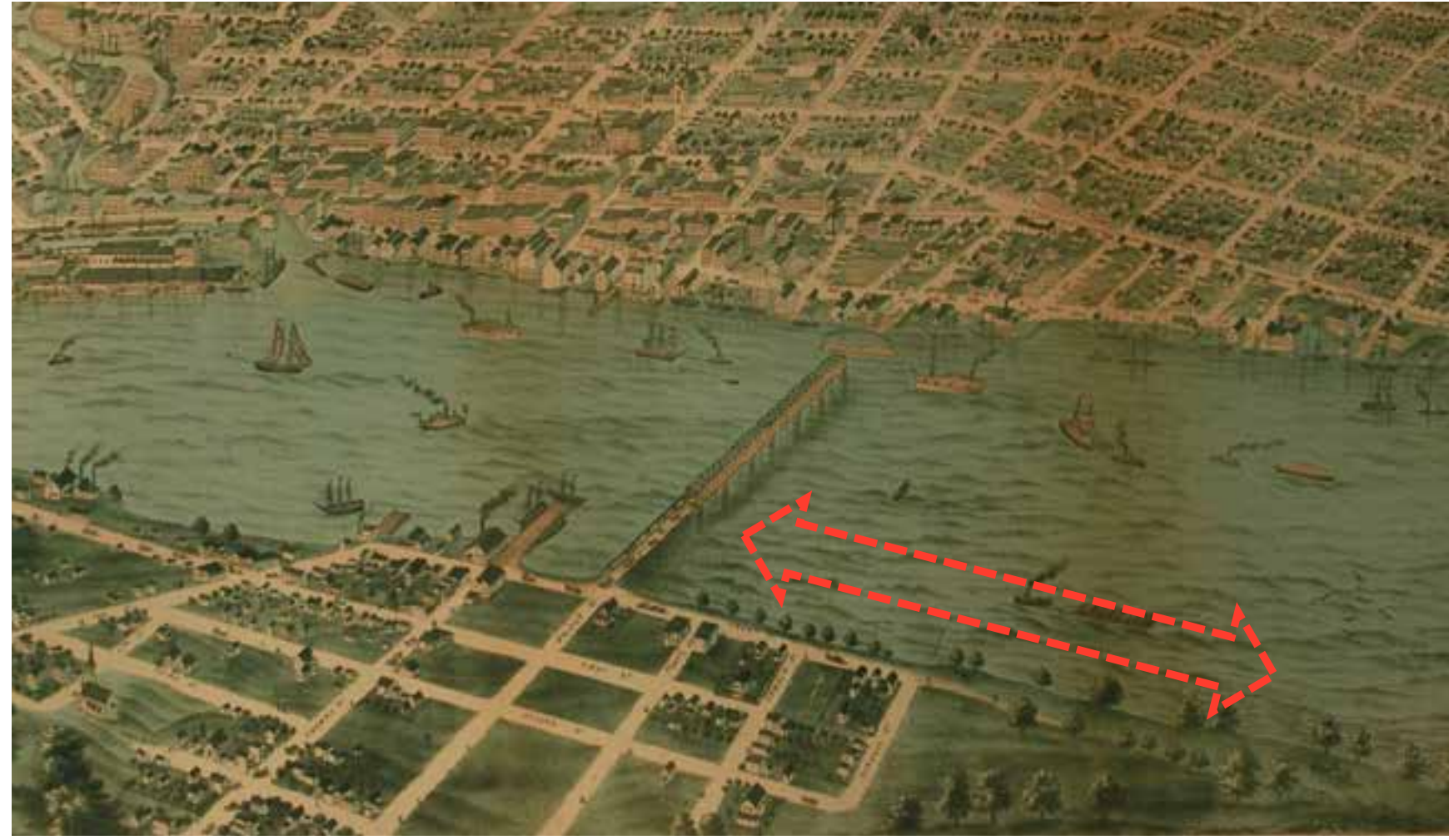


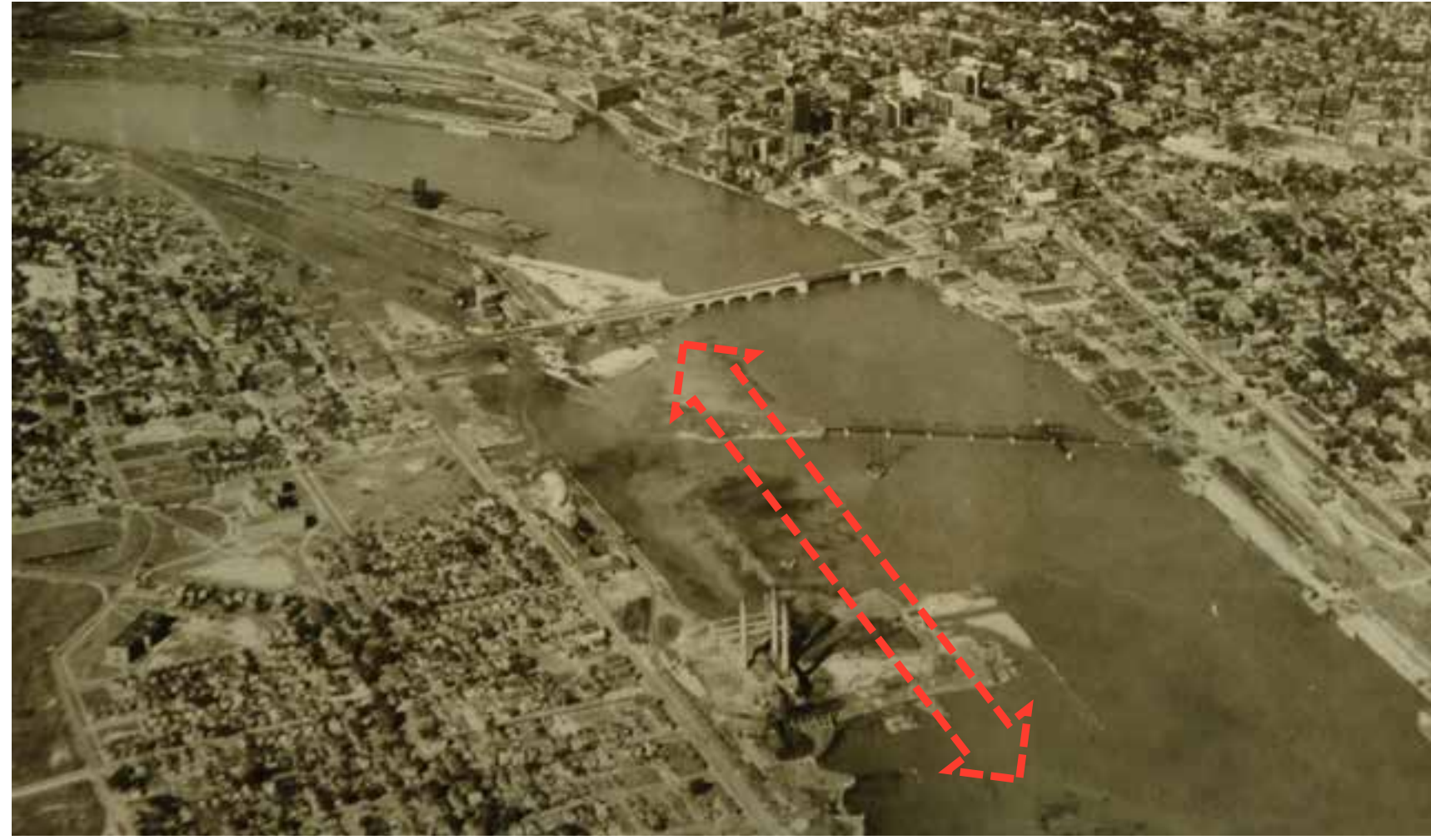
CONNECTING TO THE SITE

Located along the Maumee river, this parcel of land has experienced quite the transformation. From once lying under-water, to the home of various industrial uses (including the Toledo Edison Acme Power Plant), to the current vacant landscape that you see today, it's time for a new future for the East Toledo Riverfront.



UNDER THE MAUMEE (SITE 1890)

The site of the future Metropark was actually completely underwater when the Maumee River served as an important trade route for the region.



TOLEDO EDISON ACME POWER PLANT (SITE 1918-1993)

The Toledo Edison Acme power plant was a 72 megawatt steam turbine facility. Built in 1918, the plant was upgraded with a new turbine in 1941 to keep up with demand for power from the local defense industry.



PREPARING FOR A NEW FUTURE (1993)

The plant was one of two closed in 1993 by Centerior Energy Corporation. Demolition of the plant was announced in 2007, and was completed in 2013.

THE SITE TODAY...

